

SL MODEL

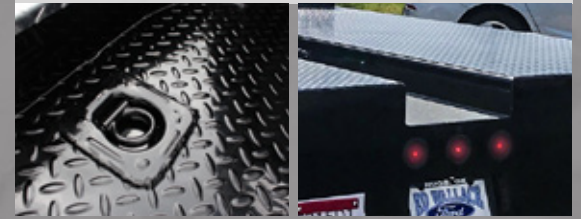


Skirted Smooth Side with Front/Rear Tool Boxes and Rub Rails



2023 SL

The Norstar SL Journeyman Bed is a marriage between our two most popular beds, the SD and ST. Our Journeyman Bed offers the best of both worlds with multiple tool boxes, a full-width deck, rub rails and stake pockets, and many more features for whatever the job throws at you.



STANDARD FEATURES

- Structural Steel Frame
- 4" Channel Runners
- 2.5" 18.5k Rated Receiver
- 30k Rated 2 5/16" GN Ball
- Formed 3 x 3/16" Channel Cross Members
- Steel Tube Head Rack with Cross Bars, Tail & Rev. Lights
- Steel 1/8" Diamond Plate Floor
- Built in Gooseneck Well with Ball Mounted & Diam Plate Lid
- Angled Fuel Filler Neck & DEF Ready
- 4 Tool Boxes & Locking Chrome Paddle Latches (6 on 11'4")
- Skirted Rear Bumper with Anti-Slip Step
- 12Ga Steel Construction with 11Ga Bumper
- Adjustable Black Smooth Fender Flares

- 3/4" LED Marker Lights
- 4 Clear 6" Oval LED Reverse Lights
- 6 Red 6" Oval LED ST/TL/TN Lights
- Single LED License Plate Light
- Side & Rear Reflectors
- Primer & Powder Coated Black
- All Lighting DOT Approved
- Molded Sealed Harness with Resistors
- 7 Way Receiver Female Plug with Adapter
- 7 Way Plug in Gooseneck Well
- Adjustable Galvanized Shelf in Front Tool Boxes
- Mudflap Brackets

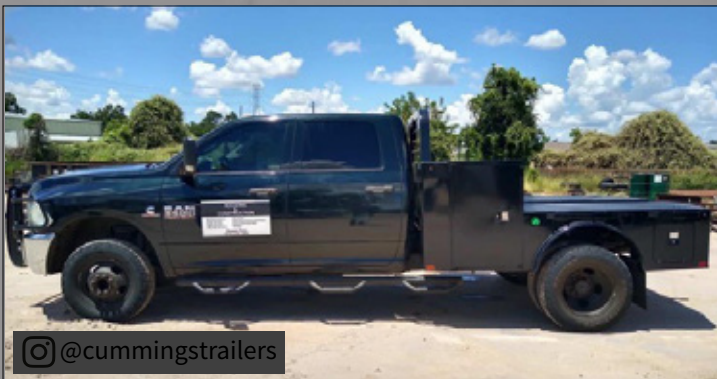


Skirted Smooth Side with Front/Rear Tool Boxes and Rub Rails

2023 BASE MODELS

MODEL	LENGTH	WIDTH	CAB TO AXLE	WEIGHT	DECK WIDTH
Single Wheel Short Bed	84"	84"	38"(Dodge/Megacab), 40"(Ford), 42"(Chevy/GMC)	1450	80"
Mega Cab Dually	84"	90"	38"(Megacab Dually)	1735	93"
Single Wheel Long Bed	8'6"	84"	56"(Chevy/GMC, Ford), 58"(Dodge, Ford-Verify)	1705	80"
Dually (Bed Takeoff)	8'6"	90"	56"(Chevy/GMC, Ford), 58"(Dodge, Ford-Verify)	1735	90", 93"
Cab & Chassis Single Wheel	9'4"	84"	60"(Chevy/GMC,Dodge, Ford)	1790	80"
Cab & Chassis Dually	9'4"	90"	60"(Chevy/GMC,Dodge, Ford)	1820	90", 93"
Cab & Chassis Dually	11'4"	90"	84"(Chevy/GMC,Dodge, Ford)	2180	90", 93"

*WEIGHT OF UNITS ARE APPROXIMATES ONLY AND SUBJECT TO CHANGE DEPENDING ON OPTIONS



APPEARANCE PACKAGES

These options are sold in groups. See list below for option description.

GROUP	INCLUDED OPTIONS
P02	X50 + F02
P03	W50 + F02 + W51 + W52 + X50

APPEARANCE OPTION REFERENCE LIST

- F02 = STAINLESS STEEL FENDERS
- W50 = CHROME ACCENT LIGHT PACKAGE
- W51 = CHROME LIGHT HOUSING/ DUALY ONLY
- W52 = CHROME LICENSE PLATE HOUSING
- X50 = ALUMINUM DIA PLATE SKIRT COVER

INDIVIDUAL OPTIONS

These options are available in combination & individually

CODE	DESCRIPTION
CT#	C-TECH TOOL CABINETS
I37	37.75" HEAD RACK
I39	39.75" HEAD RACK
I41	41.75" HEAD RACK
I45	44.75" HEAD RACK
X01	15" GN TROUGH
U06	B&W TURNOVER BALL
HB1	BALE SPIKES
S52	REAR STAKE POCKETS