



# SD MODEL

Skirted Smooth Side with Front, Top and Rear Tool Boxes

## NEW STANDOUT UPDATES FOR 2025

- A. Flush Mount Top Lid
- B. Whale Tail Compression Latches
- C. 3 Point Latch On Front Toolbox
- D. Flush Mount Rear Work Lights, 3600 Lumens
- E. Bolt On Hinges
- F. Smoked Lights Throughout
- G. Cargo Lights On The Deck/Inner Cabinet
- H. Sensor Knockouts
- I. Spare Tire Knockout
- J. Standardized B&W Turn Over Ball GN Hitch
- K. Angle Box Pull Out Tray
- L. Notched Head Rack
- M. Fuel Filler Door

## ALL NEW 2025 SD

We have updated our popular SD Service bed! This is one of our best selling models, and for good reason too, it's perfect for day-to-day tasks. Featuring multiple standard tool boxes, adjustable smooth flare fenders, a rear lockable compartment, 12 Ga steel construction and much more, this bed is built tough.

### POPULAR PROFESSIONS



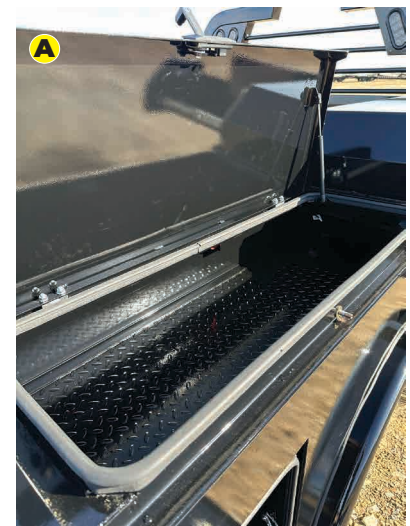
CONSTRUCTION



MUNICIPALITIES/  
UTILITIES



MAINTENANCE



FLUSH MOUNT TOP LID



## STANDARD FEATURES

- Structural Steel Frame
- 2.5" 18.5k Rated Receiver
- 4" Runner Channels
- Formed 3 x 3/16" Channel Cross Members
- Steel Tube Head Rack with Cross Bars
- Steel 1/8" Diamond Plate Floor
- Fold-Down Tailgate with Latch
- Fuel Filler & DEF in Same Location
- Skirted Rear Bumper with Anti-Slip Step
- 2 Angled Top Toolboxes with Pull Out Tray
- 2 Horizontal Top Toolboxes with Flush Mount Lid
- 2 Front Toolboxes with Whale Tail Compression Latch w/ 3 Point Locking System
- 2 Rear Toolboxes with Whale Tail Compression Latch
- Adjustable Galvanized Shelves in Front Tool Boxes
- 12Ga Steel Construction with 11Ga Bumper
- Dual LED Flush Mount Rear Work Lights
- Primer & Powder Coated Black
- 3/4" LED Marker Lights
- Mudflap Brackets
- Single LED License Plate Light
- Side & Rear Reflectors
- All Lighting DOT Approved
- Molded Sealed Harness
- 7 Way Receiver Female Plug with Adapter

# SD MODEL

Skirted Smooth Side with Front, Top and Rear Tool Boxes



## 2025 BASE MODELS

MODEL	LENGTH	WIDTH	CAB TO AXLE	WEIGHT	DECK WIDTH
Single Wheel Short Bed	84"	84"	38"(Dodge/Megacab), 40"(Ford), 42"(Chevy/GMC)	1450	50"
Mega Cab Dually	84"	90"	38"(Megacab Dually)	1735	50"
Single Wheel Long Bed	8'6"	84"	56"(Chevy/GMC, Ford), 58"(Dodge)	1705	50"
Dually (Bed Takeoff)	8'6"	90"	56"(Chevy/GMC, Ford), 58"(Dodge)	1735	50"
Cab & Chassis Single Wheel	9'4"	84"	60"(Chevy/GMC,Dodge, Ford)	1790	50"
Cab & Chassis Dually	9'4"	90"	60"(Chevy/GMC,Dodge, Ford)	1820	50"
Cab & Chassis Dually	11'4"	90"	84"(Chevy/GMC,Dodge, Ford)	2180	50"

\*WEIGHT OF UNITS ARE APPROXIMATES ONLY AND SUBJECT TO CHANGE DEPENDING ON OPTIONS



FUEL FILLER DOOR

## APPEARANCE PACKAGES

These options are sold in groups. See list below for option description.

GROUP	INCLUDED OPTIONS
P02	X50 + F02
P07	W50 + F02 + W51 + W52 + X50 + X58

## APPEARANCE OPTION REFERENCE LIST

- F02 = STAINLESS STEEL FENDERS
- W50 = CHROME ACCENT LIGHT PACKAGE
- W51 = CHROME LIGHT HOUSING/ DUALY ONLY
- W52 = CHROME LICENSE PLATE HOUSING
- X50 = ALUMINUM DIA PLATE SKIRT COVER
- X58 = ALUMINUM DIA PLATE TOP TOOLBOX COVERS



3 POINT LOCKING SYSTEM

## INDIVIDUAL OPTIONS

These options are available in combination & individually

- HEADRACK EXTENSION AVAILABLE
- 6 DRAWER C-TECH AVAILABLE
- WHITE AVAILABLE



ANGLE BOX PULL OUT TRAY



**WHALE TAIL COMPRESSION LATCH**



**CARGO LIGHTS ON THE DECK/INNER CABINET**



**FLUSH MOUNT REAR WORK LIGHTS, 3600 LUMENS**



**BOLT-ON HINGES**



**HEAD RACK NOTCHED FOR TRUCK 3RD BREAK LIGHT VISIBILITY**



**SMOKED LIGHTS**



**SPARE TIRE KNOCK-OUT**



**SENSOR KNOCK-OUTS**