

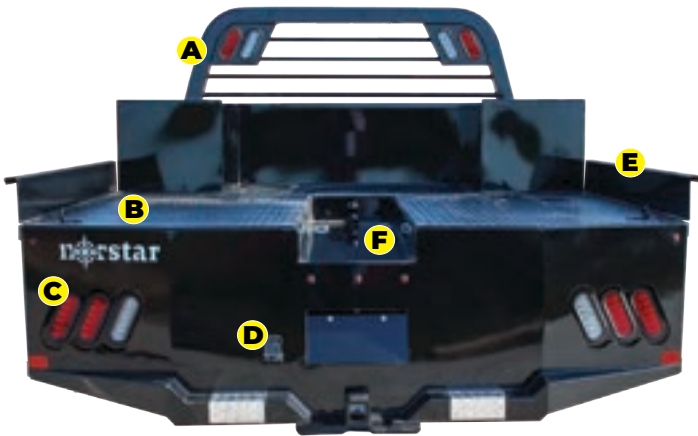
# SL MODEL



Skirted Smooth Side with Front/Rear Tool Boxes and Rub Rails

## 2025 SL

The Norstar SL Journeyman Bed is a marriage between our two most popular beds, the SD and ST. Our Journeyman Bed offers the best of both worlds with multiple tool boxes, a full-width deck, rub rails and stake pockets, and many more features for whatever the job throws at you.



- A. Steel Tube Head Rack
- B. 1/8" Diamond Plate Floor
- C. Full LED Lighting
- D. 4/5 & 7-Way Plug
- E. Removable Side Rails (Optional)
- F. Gooseneck Trough (Optional)
- G. Front Side Tool Box
- H. Rub Rails & Stake Pockets
- I. Removable Fenders
- J. Bottom Side Tool Box
- K. 30k Rated 2 5/16" GN Ball
- L. 2.5" 18.5k Rated Receiver



## STANDARD FEATURES

- Structural Steel Frame
- 4" Channel Runners
- 2.5" 18.5k Rated Receiver
- 30k Rated 2 5/16" GN Ball
- Formed 3 x 3/16" Channel Cross Members
- Steel Tube Head Rack with Cross Bars, Tail & Rev. Lights
- Steel 1/8" Diamond Plate Floor
- Built in Gooseneck Well with Ball Mounted & Diam Plate Lid
- Angled Fuel Filler Neck & DEF Ready
- 4 Tool Boxes & Locking Chrome Paddle Latches (6 on 11'4")
- Skirted Rear Bumper with Anti-Slip Step
- 12Ga Steel Construction with 11Ga Bumper
- Adjustable Black Smooth Fender Flares
- 3/4" LED Marker Lights
- 4 Clear 6" Oval LED Reverse Lights
- 6 Red 6" Oval LED ST/TL/TN Lights
- Single LED License Plate Light
- Side & Rear Reflectors
- Primer & Powder Coated Black
- All Lighting DOT Approved
- Molded Sealed Harness with Resistors
- 7 Way Receiver Female Plug with Adapter
- 7 Way Plug in Gooseneck Well
- Adjustable Galvanized Shelf in Front Tool Boxes
- Mudflap Brackets



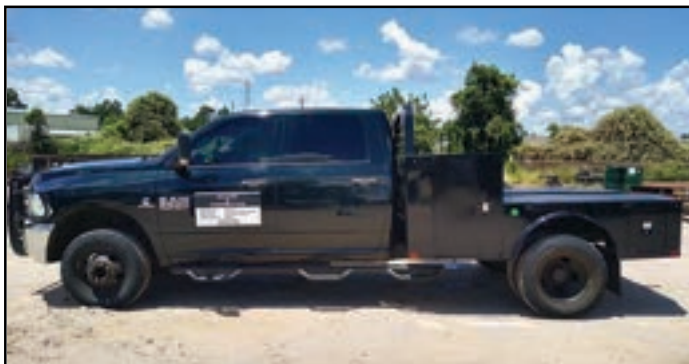
# SL MODEL

Skirted Smooth Side with Front/Rear Tool Boxes and Rub Rails

## 2025 BASE MODELS

MODEL	LENGTH	WIDTH	CAB TO AXLE	WEIGHT	DECK WIDTH
Single Wheel Short Bed	84"	84"	38"(Dodge/Megacab), 40"(Ford), 42"(Chevy/GMC)	1450	80"
Mega Cab Dually	84"	90"	38"(Megacab Dually)	1735	93"
Single Wheel Long Bed	8'6"	84"	56"(Chevy/GMC, Ford), 58"(Dodge, Ford-Verify)	1705	80"
Dually (Bed Takeoff)	8'6"	90"	56"(Chevy/GMC, Ford), 58"(Dodge, Ford-Verify)	1735	90", 93"
Cab & Chassis Single Wheel	9'4"	84"	60"(Chevy/GMC,Dodge, Ford)	1790	80"
Cab & Chassis Dually	9'4"	90"	60"(Chevy/GMC,Dodge, Ford)	1820	90", 93"
Cab & Chassis Dually	11'4"	90"	84"(Chevy/GMC,Dodge, Ford)	2180	90", 93"

\*WEIGHT OF UNITS ARE APPROXIMATES ONLY AND SUBJECT TO CHANGE DEPENDING ON OPTIONS



## APPEARANCE PACKAGES

These options are sold in groups. See list below for option description.

GROUP	INCLUDED OPTIONS
P01	S52
P02	X50 + F02
P03	W50 + F02 + W51 + W52 + X50

## APPEARANCE OPTION REFERENCE LIST

F02 = STAINLESS STEEL FENDERS  
W50 = CHROME ACCENT LIGHT PACKAGE  
W51 = CHROME LIGHT HOUSING/ DUALY ONLY  
W52 = CHROME LICENSE PLATE HOUSING  
X50 = ALUMINUM DIA PLATE SKIRT COVER  
S52 = REAR RUB RAIL & STAKE POCKETS

## INDIVIDUAL OPTIONS

These options are available in combination & individually

CODE	DESCRIPTION
CT#	C-TECH TOOL CABINETS
X01	15" GN TROUGH
U06	B&W TURNOVER BALL
HB1	BALE SPIKES
WHT	WHITE

Photos may include optional features.